

WOODLEY EQUIPMENT COMPANY

PRODUCT GUIDE

Issue 3.0



InSight[®] Analysis



"PASSIONATE ABOUT LABORATORY DIAGNOSTICS"

WELCOME TO OUR PRODUCT GUIDE

Woodley Equipment Company was **established in 1989** and prides itself on being a market leading supplier of specialist **laboratory equipment, diagnostic and critical care** products to the **veterinary industry worldwide**.

A dedicated on-the road Account Manager team provides **in-practice support**, training and on-going advice. This team is supported at our headquarters with a technical support and service department staffed with **Biomedical Scientists** and **Service Engineers** who deliver proven high quality after-sales care.

As well as a **UK nationwide sales force**, Woodley has an international distribution network offering a rapidly growing portfolio of **high quality products** with worldwide distribution rights. Woodley also has a proven track record and outstanding **customer loyalty** in the form of repeat business and client referrals.

Woodley seeks to supply veterinarians and distributors with the equipment and services to best support Practices, thus enabling them to respond to the needs of their clients, while operating a more **efficient and profitable business**.

Quantum Vet Diagnostics, a division of Woodley Equipment, is the **UK's number 1** provider of veterinary wet chemistry solutions.



"PASSIONATE ABOUT LABORATORY DIAGNOSTICS"



InSight V3[®] PLUS

Veterinary Haematology Analyser

A fully automated multi-species
Haematology Analyser

**3 PART DIFFERENTIAL
WITH EOSINOPHIL FLAG.**

Parameters Available

| | | |
|-------|--------|--------|
| WBC | RBC | RDW_SD |
| LYM% | HGB | PLT |
| MID% | HCT | MPV |
| GRAN% | MCV | PDW |
| LYM# | MCH | PCT |
| MID# | MCHC | P_LCR |
| GRAN# | RDW_CV | P_LCC |

- Quick and easy to use
- Small sample volume - 13µl whole blood
- 60 second analysis time
- 3-part differential, 21 parameters with 3 histograms and eosinophil flag
- Species specific reference ranges
- Impedance technology
- Stores up to 100,000 results
- Fully automated
- Touch screen
- Low maintenance
- Results transmitted via InSight p-LINK to Practice Management Systems



InSight V5[®]

Veterinary Haematology Analyser

A fully automated multi-species
Haematology Analyser

**5 PART DIFFERENTIAL
WITH LASER TECHNOLOGY.**

Parameters Available

| | | | |
|------|-------|--------|-----|
| WBC | LYM# | HGB | HCT |
| NEU% | EOS% | MCV | PLT |
| NEU# | EOS# | MCH | MPV |
| MON% | BASO% | MCHC | PDW |
| MON# | BASO# | RDW-CV | PCT |
| LYM% | RBC | RDW-SD | |

- Quick and easy to use
- Small sample volume - 15µl whole blood
- 60 second analysis time
- 5-part differential, 23 parameters
- Species specific reference ranges
- Independent channel for Basophil measurement
- Powerful capability to flag abnormal cells
- Fully automated
- Touch screen
- Low maintenance
- Results transmitted via InSight p-LINK to Practice Management Systems



InSight[®] 5 Diff Retic

**DUAL LASER
IMPEDANCE TECHNOLOGY.**

5 Part Differential Laser Haematology Analyser with Reticulocytes

Parameters Available

| White Blood Cells | | Red Blood Cells | |
|-------------------|-------|-----------------------|----------|
| WBC | RBC | Retics#* | |
| NE# | NE% | Hb | Retics%* |
| LY# | LY% | HCT | RDW |
| MO# | MO% | MCV | RSD |
| EO# | EO% | MCH | NRBC#* |
| BA# | BA% | MCHC | NRBC%* |
| BAND# | BAND% | MCVr | RDWr |
| Platelets | | Printed WBC, RBC, | |
| PLT PDW | | PLT Cyotgrams | |
| MPV PCT | | *certain species only | |

- Compact, benchtop size
- Small sample size - 20µl whole blood
- True 31 parameter system, 2 minute analysis time
- Reticulocytes on every sample
- Quick and easy operation, low maintenance
- Over 80 species on board
- 5-part differential with additional reticulocytes, band neutrophils & NRBC
- 2 new Retic measurements for maturity index and anisocytosis
- Touch screen
- Results transmitted via InSight p-LINK to Practice Management Systems



InSight[®] p-LINK

To facilitate connectivity and results integration with Practice Management Systems



Cloud based access
to Lab Reports

- InSight p-LINK is a small computer which enables sample results from in-practice analysers to be transferred to a Vet Practice network folder with results in Text, CSV, PDF or VetXML formats
- Now includes cloud based access to lab reports
- Quick and easy to set up via a wired LAN point or Wi-Fi
- Works in the background - no user interaction required

RapidVet® - H Blood Typing Kits - Canine & Feline

In-practice tests for rapid determination of Canine DEA 1.1 and Feline A, B or AB blood types.

These fast in-house blood typing card kits for Dogs and Cats are essential for transfusion and breeding decisions. They are fast, easy to use, economical and can be stored at room temperature.

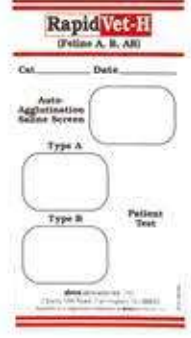
RapidVet-H Canine

- For Canine DEA 1.1
- Fast, easy, economical and VITAL
- Results in 2 minutes
- Auto-agglutination screen
- Requires 3 drops of whole blood
- Available in kits of 5



RapidVet-H Feline

- For Feline A, B & AB
- Fast, easy, economical and VITAL
- Results in 2 minutes
- Auto-agglutination screen
- Requires 3 drops of whole blood
- Available in kits of 5



“Every Dog & Cat in need of a transfusion should be blood typed” Dr. Urs Giger, Dr.med.vet., Dip ACVIM, ECVIM

RapidVet® - H Canine DAL

Canine blood types other than DEA 1 can also be important in transfusion decisions. RapidVet-H Canine DAL is intended for use to classify dogs as DAL positive or negative. This information can be essential in donor selection, especially in the Dalmation, Doberman, Shih Tzu and Lhasa Apso breeds, which reportedly have a higher percentage of DAL-negative blood types. It is also useful in determining the cause of an incompatible crossmatch between DEA 1 compatible dogs.

As many as 98% of dogs, including blood donors, carry the DAL antigen. This antigen elicits strong immunogenicity. Sensitisation through transfusion can occur in dogs that lack it.

DAL-negative blood types are more common in certain breeds and they are more at risk of delayed and acute haemolytic transfusion reactions if transfused with DAL positive blood. Doberman Pinschers are especially at risk since the prevalence of both DAL-negative blood and von Willebrand disease is relatively high.



- Enable more complete, in-practice, pre-transfusion work-up and donor selection
- Useful in determining possible cause of an incompatible crossmatch between DEA 1 compatible dogs
- Clear, easy to follow instructions
- Visible results within 1-2 minutes
- 2 or 5 card kits available

RapidVet® - H Crossmatch Kits

In-practice crossmatch test kits for use in transfusion medicine on either Canine or Feline patients.

- Will detect all major Canine and Feline blood group incompatibilities
- Performed in-practice in 10 minutes
- Easy to use and results are clear
- Available in kits of 3 tests
- Minor Crossmatch Kits also available

Essential for good transfusion practice



Use alongside Canine & Feline Blood Typing Kits

InSight® Roller Mixer

- Gentle rocking and rolling motion for optimum mixing
- Fixed speed of 30 RPM with speed accuracy of +/- 2 RPM
- Continuous/infinite mode of operation
- Tilt angle of +/- 3°
- Tool free removal/installation of rollers for replacement and cleaning
- Adjustable rollers spacing to hold different diameter tubes
- Suitable for mixing of blood samples, viscous substances and for liquid-solid suspensions



InSight® Veterinary Blood Urea Test Strips

A quick and easy, low cost test for in-practice quantitative determination of urea in whole blood.

- One drop of venous or capillary whole blood
- Test time only 90 seconds
- Colour chart for reading test results is printed on the bottle label



InSight® qLabs® Veterinary Coagulation Analyser

- Requires 1 drop of non-anticoagulated whole blood (10µl)
- PT/aPTT tested simultaneously on 1 test strip
- Room temperature test strip storage
- Fill test strip directly from syringe
- QC material available
- No need to transfer sample into citrate tube
- Low cost analyser and consumables
- 'Test count up' for immediate assessment
- 2 year warranty



In-practice Point of Care coagulation testing

HemoCue® WBC Analyser

HemoCue WBC provides a total white cell count. The system offers an innovative, quick and reliable way to assess the health of the animal.

- Easy to use
- Results in 2 minutes
- Small sample volume - 10µl
- WBC count available using whole blood and synovial fluid



Simple to use & results in 2 minutes

Partner with InSight HCT Meter for Rapid Haematological Assessment

InSight® Microscope Eyepiece Adapter for Smartphones



- Mounts any smartphone to any microscope in minutes!
- Smartphone camera can then capture photos & videos for real-time viewing on smartphone screen, via video conferencing, emailing or sharing online

Capture & share microscopic images

InSight® Veterinary HCT Meter

The InSight HCT Meter is a low cost handheld meter for the measurement of Canine, Feline and Equine haematocrit and total haemoglobin in capillary and venous whole blood.

- Calibrated for Dogs, Cats and Horses
- 30 second test time
- One drop of whole blood (Venous, Capillary or EDTA)
- HCT results reported as %



Calibrated and validated specifically for Dogs, Cats and Horses

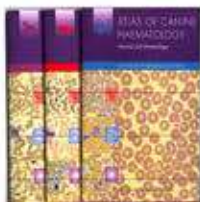
Vision V5000 Microscope

- LED illuminator
- Excellent optical resolution
- Wide-field eyepieces
- Dioptric compensation
- DIN achromatic objectives 4x, 10x, 40x, 100x
- Coaxial coarse and fine focusing



Haematology Atlas

Haematology Atlas written exclusively for Woodley Equipment by Kostas Pappasoulis DVM PhD DipRCPath MRCVS (Bristol Vet School).



Titles Available - Canine, Feline & Equine
These atlases are an excellent microscope-side reference guide offering normal cell morphology.

- Erythrocytes
- Neutrophils
- Lymphocytes
- Eosinophils
- Basophils
- Platelets
- Methodology: Microhaematocrit
- Methodology: Blood Smears

InSight Mini Chem®

The InSight Mini Chem is intended for the quantitative determination of Urea (UR), Creatinine (CR) and Uric Acid (UA) in capillary whole blood, venous whole blood, plasma (lithium heparin) and serum.

- Easy to operate
- Portable meter
- Quick and accurate results in under 5 minutes
- Multi function - 3 parameters on 1 reagent strip
- Bluetooth built-in to enable transfer of data to your phone, tablet or PC
- Rechargeable - built-in Lithium-ion battery
- Small sample requirement - 35µl of whole blood, plasma or serum
- Stores up to 500 results



3 Parameters on 1 Reagent Strip

InSight® DB



A fully automated clinical chemistry analyser which uses liquid reagents and is approximately 70% cheaper to run than dry chemistry

Chemistry Analyser

- User friendly intuitive veterinary software
- Onboard refrigerated reagent/sample compartment
- Minimal user maintenance
- Fast throughput - example batch times:
9 mins 1x GHP, 13 mins 2x GHP, 16 mins 3x GHP
- Continuous loading, no need to wait for batch completion
- Stat function for urgent tests
- Fully automated with auto-reflex dilution of over range results
- Flexible testing, single parameter or up to 20 user defined profiles
- Small footprint - 414 (W) x 565 (D) mm
- Online remote assistance directly to your analyser
- Long life ceramic syringes to ensure accuracy and precision
- Environmentally friendly semi-disposable reaction cuvettes with high efficiency wash system

Customer defined profiles and/or tests can be programmed from the following:

Albumin, Alkaline Phosphatase, ALT, AST, Amylase, Bilirubin (Total), Calcium, Cholesterol, CK, Creatinine, Glucose, GGT, Phosphate, Protein (Total) & Urea.

BHB, Bile Acids, Chloride, Copper, Fibrinogen, Fructosamine, GLDH, GSH-Px (as Selenium), Haemoglobin, IgG, LDH, Lipase, Magnesium, NEFA, SAA, T4 (Total Thyroxin), Triglycerides, Uric Acid, Urine Creatinine, Zinc, Phenobarbitone, Iron, Ferritin and TIBC

skyla VB1 Veterinary Chemistry Analyser



- Fast and reliable
- Compact, benchtop size
- Performs up to 15 biochemistry tests simultaneously
- Performs up to 3 single/dual tests simultaneously
- 200µl whole blood, serum or plasma
- LCD colour touch screen & built-in printer
- Fully automatic system with walk away operation
- Built-in QC and calibration for each test
- Species specific reference ranges
- Stores up to 50,000 results

Parameters Available:

ALB, ALP, ALT, AMY, AST, BUN, Ca, CREA, CPK, GGT, GLU, K⁺, Na⁺, PHOS, TBIL, CHOL, TP, B Acids, T4, Mg, UA, TCO₂, TRIG, LAC, FRU, LIPA, UCRE, UPRO, GLOB*, A/G*, Na⁺/K⁺, BUN/CREA*, UPC*, UREA* * Calculated

For both Rotor Profiles & Single/Dual Tests

Highly accurate test results in under 15 minutes

skyla VB1 & Solution

Panel Test Portfolio:

- Preanaesthetic
- Renal
- Diagnosis
- Diagnosis Plus
- Equine
- Thyroid/T4
- Large Animal
- Liver Plus
- Avian & Reptile
- Diabetes
- Electrolytes
- Diagnosis II
- Critical Care

skyla Solution

Veterinary Chemistry + Immunoassay Analyser



- Can run 3 rotors simultaneously, 2 Chemistry + 1 Immunoassay
- Chemistry rotors and parameters identical to skyla VB1⁺ Analyser
- Immunoassay parameters currently available: cCRP, SAA, PHBR, cPROG, TT4, cTSH, cCOR, cA1C
- Easy and quick operation
- Easy to use LCD colour touch screen
- Stores up to 50,000 results

Single/Dual Chemistry Parameters for skyla VB1 & skyla Solution

Single Test

- CREA
- BUN
- TBIL
- LAC
- Ammonia

Dual Test

- Na⁺ & K⁺
- PHOS & Ca
- CHOL & TRIG
- GGT & CPK
- ALT & ALP
- BA & CHOL
- AST & CPK
- LIPA & AMY
- UPC Kit (UPRO & UCRE)



Veterinary Glucose Meter

g-Pet PLUS Veterinary Glucose Meter is calibrated specifically for use in Dogs, Cats and Horses, ensuring an accurate result is reported for each species.

- Biosensor auto code technology
- Accurate results
- Easy to use
- Small sample of whole blood (0.7µl)
- Accurate results displayed within 5 seconds
- Readable range 1.1 - 33.3 mmol/L
- 500 result automatic memory
- HCT range 20-60%
- Lifetime warranty



**Calibrated for
Canine, Feline &
Equine use**



Veterinary Lactate Meter

L-Pet only requires a small drop of blood (3µl). The test strips draw blood in and then measure using an advanced biosensor specific for lactate concentration in blood.

- Advanced Biosensor Test Strips
- Small sample size (3µl)
- Results in less than 45 seconds
- Large LCD display
- Stores up to 300 results
- Easy operation
- Portable
- Specific Lactate Analyser QC Material available
- 5 year warranty



**An easy to use
handheld meter
providing blood
lactate results in
just 45 seconds**

i-SMART 30 VET ELECTROLYTE ANALYSER

Fast & Accurate

- Fast, accurate analysis
- Tests electrolytes Na⁺, K⁺, Cl⁻ & iCa⁺⁺
- 60µl sample volume
- Results in 35 seconds
- Species specific reference ranges



All-in-One Cartridge

- Cartridge contains electrodes, all consumables & waste
- No user maintenance
- Automatic calibration

Measured electrolytes

| | |
|-------------------|--------------------|
| Na ⁺ | 20 - 250 mmol/L |
| K ⁺ | 0.5 - 20.0 mmol/L |
| Cl ⁻ | 20 - 250 mmol/L |
| iCa ⁺⁺ | 0.25 - 5.00 mmol/L |

**Fast, accurate & maintenance free In-Practice
electrolyte analysis - now with Ionised Calcium**

PocketChem™ BA Blood Ammonia Analyser

PocketChem BA measures blood ammonia levels. The device enables immediate testing and delivers fast, accurate results.

- Whole blood measurement
- Ready for use 24 hours a day
- Small 20µl sample volume
- Battery powered
- Easy to maintain
- Temperature compensation
- Lightweight and compact design
- Detachable printer available
- Supports the diagnosis of hepatic cephalopathy
- Helps detect and evaluate urea cycle defects
- Monitor patients with liver disease



StatStrip® Lactate Xpress Meter

- Accurate, quantitative results in 13 seconds
- Easy to use and portable
- Small 0.6µl sample size
- Venous or arterial whole blood
- Correct results for HCT
- No calibration required
- Eliminates interfering substances
- Stores 400 results



StatStrip® Creatinine Xpress Meter

- Rapid assessment of kidney function
- Accurate, quantitative results in 30 seconds
- Easy to use and portable
- Small 1.2µl sample size
- Capillary, venous or arterial whole blood
- Correct results for HCT
- No calibration required
- Eliminates interfering substances
- Stores 400 results



NovaVet Blood Ketone Meter

- Measures blood beta-hydroxybutrate (BHBA), the gold standard for detecting subclinical ketosis
- Accurate, quantitative results in 10 seconds
- Easy to use and portable
- No calibration required
- Simple test procedure in the field
- Small 0.8µl sample size
- Stores 400 results



InSight® Vital Signs + ECG

InSight Vital Signs + ECG Handheld Monitor is ideal for use in Veterinary Critical Care, General Health Screening and Anaesthesia Monitoring.



- Small handheld monitor
- Measures ECG + NIBP + SpO₂ + TEMP + Heart Rate + Mean Arterial Pressure (MAP)
- Includes cage clip & charging dock
- Easy to use
- Accurate measurement in 0.05% Low Perfusion Index
- Audio and visual alarm
- Records up to 48 hours of measurement data

Simple, Accurate, Low Cost, Vital Signs Monitoring

Measures ECG + NIBP + SpO₂ + TEMP + Heart Rate + Mean Arterial Pressure (MAP)

InSight® Blood Pressure Monitor

Portable veterinary blood pressure monitor suitable for spot checks or continuous monitoring.



- Accurate and reliable - uses 2 patented, algorithms specifically developed for animals based on animal vital signs
- Easy to use - large buttons or intuitive touch screen
- Silent - measures BP quietly and alarms can be silenced to avoid distressing animals
- Fast - take multiple measurements quickly
- Memory - 1000 results in Monitor Mode, 100 patients and 200 Data sets per patient in Spot Mode
- Portable - rechargeable lithium or alkaline battery operation
- Data transfer - APP available to transfer data to mobile phone or Tablet/PC via Bluetooth

Measures NIBP

InSight® Vet Vital Signs

InSight Vet Vital Signs Handheld Monitor is ideal for use in Veterinary Critical Care, General Health Screening and Anaesthesia Monitoring.



- Small handheld monitor
- Measures NIBP + SpO₂ + TEMP + Heart Rate + Mean Arterial Pressure (MAP)
- Includes cage clip & charging dock
- Easy to use
- Accurate measurement in 0.05% Low Perfusion Index
- Audio and visual alarm
- Records up to 48 hours of measurement data

Simple, Accurate, Low Cost, Vital Signs Monitoring

Measures NIBP + SpO₂ + TEMP + Heart Rate + Mean Arterial Pressure (MAP)

InSight® Pulse Oximeter

InSight Vital Signs + ECG Handheld Monitor is suitable for small animal vital signs monitoring of blood oxygen saturation (SpO₂).



- Small handheld monitor
- Measures SpO₂
- Includes cage clip & charging dock
- Easy to use
- Accurate measurement in 0.05% Low Perfusion Index
- Audio and visual alarm
- Records up to 48 hours of measurement data

Simple, Accurate, Low Cost, Vital Signs Monitoring

Measures SpO₂

AliveCor® Veterinary ECG/Heart Monitor Universal Adaptor

Veterinary iPhone ECG/Heart Monitor Universal Adaptor is designed to fix onto any iPhone® and wirelessly communicates with the AliveECG Vet app. Once partnered with the ECG monitor, it transforms any iPhone® into a clinical-quality, single-lead ECG recorder.

- Easy to use - No stress or shaving required in most animals
- Powerful - Leverage the power, display and communication capabilities of your iPhone/Smartphone
- Accurate - Veterinary testing demonstrates accuracy in rate and rhythm compared to traditional devices
- Accessible - Securely store ECG notes and patient information on the device and in the cloud
- Convenient - Screen a wide variety of animals quicker and easier during wellness and sickness exams, in addition to pre-operative and diagnostic work-ups



An ECG device as mobile as you are

ImmunoComb® VacciCheck® In-Practice Antibody Test Kits

ImmunoComb VacciCheck Antibody Test Kit monitors serological status, reduces vaccination failure and prevents over vaccination consequences for Dogs and Cats.

VacciCheck is recommended by the WSAVA to comply with regulations to reduce unnecessary vaccinations

VACCICheck® Canine

The Canine VacciCheck Antibody Test Kit is designed to determine Dog serum antibody titre to:

- Infectious Canine Hepatitis (ICH)
- Canine Parvovirus (CPV)
- Canine Distemper Virus (CDV)

The main purpose of this kit is to provide a useful tool to assess the immune status of Dogs to the three core Canine infections.



VACCICheck® Feline

The Feline VacciCheck Antibody Test Kit is designed to determine Cat serum IgG antibody titre to:

- Feline Panleukopenia (FPLV)
- Feline Herpes Virus (FHV)
- Feline Calici Virus (FCV)

The main purpose of this kit is to provide a useful tool to assess the immune status of Cats to the three core Feline infections.

Quick & easy to use



WSAVA Guidelines state that titre testing for the 3 core Canine and Feline pathogens should be performed instead of automatic annual revaccination



AIA-360 Analyser

Offers the automation powers and performance of a large analyser in a benchtop format. Random access allows any combination of tests, in any order at any time and a throughput of 36 results per hour with the first test result in 20 minutes ensures a fast reliable service.

- Simple to use
- Fast, reliable results
- Simple maintenance
- Touchscreen with intuitive menus

Key Assays Available:

- Free T4
- Total T4
- Cortisol
- Progesterone
- ACTH
- Insulin
- cTnl

**Fully supported
Nationwide by our
Specialist Team of
Field Service Technicians**

Take a 360° look at your endocrinology testing with the TOSOH AIA-360

Integrates with Practice Management Systems

BIONOTE Vcheck V200

Immunofluorescence Analyser

Simplify In-Practice Point of Care Testing with Reference Lab Quality - Avoiding Test Referrals

Achieve true analysis with fluorescence technology

- Fully quantitative automated analyser
- Accurate diagnosis for Dogs and Cats in minutes
- Analyser provides print out and result storage



Canine Tests Available:

- cPL
- T4
- TSH
- Cortisol
- CRP
- Progesterone
- D-Dimer
- NT-proBNP
- Troponin I
- **Core Antibody:** Parvovirus, Distemper & Hepatitis

Feline Tests Available:

- T4
- fPL
- SAA
- NT-proBNP
- Troponin I
- **Core Antibody:** Calicivirus, Herpes & Parvovirus

Specifications

| | |
|-------------------------|-------------------------------|
| Testing Time: | 5 minutes (Based on CRP, SAA) |
| Weight: | 2.5kg |
| Screen: | Touchscreen 7" Colour TFT |
| Size: | 20 x 24 x 20 cm |
| Printer: | Built-in Printer |
| Sample Required: | Serum or Plasma (Heparin) |

Low Cost, In-Practice, Reference Lab Quality Immunoassay Testing



Rapid Test Kits



High Sensitivity, High Specificity Rapid Tests Kits

Feline Tests Include:

Anigen Rapid FIV Ab/FelV Ag

Feline Immunodeficiency virus antibody and Feline Leukemia virus antigen in Feline whole blood, plasma or serum

Anigen Rapid FeliD-3 Ag

Feline Parvo, Corona and Giardia antigen in Feline faeces

Anigen Rapid FCoV Ag/Ab

Feline Corona virus antigen/antibody in Feline faeces (Ag) and whole blood, plasma or serum (Ab)

Anigen Rapid FIV Ab

Immunodeficiency virus antibody in Feline whole blood, plasma or serum

Anigen Rapid FCoV Ab

Feline Corona virus antibody in whole blood, plasma or serum

Anigen Rapid FPV Ag

Feline Parvo virus antigen in Feline faeces

Anigen Rapid FHW Ag/Ab

Feline heartworm antigen and antibody in Feline whole blood, plasma or serum

Anigen Rapid FelV Ag

Feline Leukemia virus antigen in Feline whole blood, plasma or serum

Anigen Rapid FCoV Ag

For the detection of Feline Corona virus antigen in Feline faeces

Anigen Rapid Toxoplasma Ab

Toxoplasma gondii antibody in Feline whole blood, plasma or serum

Anigen Rapid FeliCheck-3

Feline immunodeficiency virus antibody, feline leukemia virus antigen and feline heartworm antibody in Feline whole blood, plasma or serum

Available exclusively from Woodley

Canine Tests Include:

Anigen Rapid CPV/CCV/Giardia Ag

Canine Parvo, Corona and Giardia antigen in Canine faeces

Anigen Rapid CPV Ag

Canine Parvo virus antigen in Canine faeces

Anigen Rapid CCV Ag

Canine Corona virus antigen in Canine faeces

Anigen Rapid CIRDC-3 Ag

Canine Infectious Respiratory Disease (CDV, CAV and CIV) in conjunctiva (CDV Ag) and nasal fluid (CAV and CIV Ag)

Anigen Rapid Rabies Ag

Rabies virus antigen

Anigen Rapid CPV Ab

For the titration of Canine Parvo virus in whole blood, plasma or serum

Anigen Rapid CDV Ab

For the titration of Canine Distemper virus antibody in whole blood, plasma or serum

Anigen Rapid CHW Ag

Canine Dirofilaria immitis antigen in Canine serum, plasma or whole blood

Anigen Rapid CDV Ag

Canine Distemper virus antigen in conjunctiva (recommended), urine, serum or plasma

Anigen Rapid CDV Ag/CAV Ag

Canine Distemper virus and Adeno virus antigen in conjunctiva (CDV Ag) and nasal fluid (CAV Ag)

Anigen Rapid C.Brucella Ab

Canine Brucella antibody in whole blood, plasma or serum

Anigen Rapid Leishmania Ab

Leishmania infantum antibody in whole blood, plasma or serum

Anigen Rapid E.Canis Ab

Ehrlichia Canis antibody in whole blood, plasma or serum

Anigen Rapid Anaplasma Ab

Anaplasma phagocytophilum/Anaplasma platys antibody in whole blood plasma or serum

Anigen Rapid Lyme Ab

Borrelia burgdorferi in Canine whole blood, plasma or serum

Anigen Rapid CPV Ag/CCV Ag

Canine Parvo virus and Corona virus antigen in Canine faeces

Anigen Rapid Giardia Ag

Giardia antigen in Canine faeces

Anigen Rapid CaniV-4

Dirofilaria immitis antigen, Ehrlichia canis antibody, Leishmania infantum antibody, Anaplasma, phagocytophilum/Anaplasma platys antibody in whole blood, plasma or serum

Anigen Rapid E.canis/Anaplasma Ab

Ehrlichia canis and Anaplasma phagocytophilum/Anaplasma platys in whole blood, plasma or serum

Anigen Rapid Total IgE

Canine Total IgE in serum

Anigen Rapid Leishmania Ab

Leishmania infantum antibodies in Canine whole blood, plasma or serum

This list is not exhaustive - please contact us with your requirements

epoc Critical Care/Blood Gas Analyser

A global leader in handheld Critical Care/Blood Gas!

Test Card Contains All Parameters

Measured Analytes:

pH, pCO₂, pO₂, Na⁺, K⁺, Cl⁻, Ca⁺⁺, Glu, Lac, Hct, BUN, Creatinine, tCO₂

Calculated Values:

HCO₃, BE (ecf), BE (b), sO₂, Hgb, AGapK

Features

- Accurate blood gas, electrolyte and critical care biochemistry results in 3 minutes
- Room temperature card storage
- 92µl sample, fresh whole blood (arterial, venous or capillary)
- Veterinary species specific software
- Portable handheld system with rechargeable battery & Bluetooth printer
- Ready to use anytime, anywhere: in-practice, theatre, patient side or equine yard
- Wi-Fi and Bluetooth enabled - easy transfer of data



RAPIDPoint® 500e Blood Gas System

Siemens Healthineers RAPIDPoint® 500e Blood Gas System is designed to meet the challenges of Point of Care testing by providing fast, accurate and comprehensive test results.

Features & Benefits

- Accurate, lab-quality test results in 60 seconds
- Easy to use, reliable, maintenance-free operation with cartridge based system, automatic calibration and QC
- Robust accuracy for sample to sample by leveraging the Siemens Healthineers designed Integri-sense™ technology
- Onboard software defences provide reassuring level of protection against cyber attacks and confidential data theft
- Simple touch screen - simply press start after inserting a sample
- Preset custom panels
- Hands-free automatic sampling with universal sample port
- Integrated barcode scanner

RAPIDPoint® 500e Tests

Blood Gas: pH, pCO₂, pO₂

Electrolytes: Na⁺, K⁺, Ca⁺⁺, Cl⁻

Metabolites: Glu, Lac

Co-oximetry: nBili, tHb, SO₂, O₂Hb, HHb, COHb, MetHb



Ideal for sites with a larger workload

Clinispin Vet Combi Multi Purpose Veterinary Centrifuge



Versatile with Combination Rotor

The Clinispin Vet Combi is a high speed centrifuge equipped with a maintenance free drive, digital display and simple interface for silent and efficient operation.

The combination Rotor provides efficient separation of blood and urine samples and accurate Haematocrit determination.

- 3 pre-defined presets for easy and rapid operation at one press of a button:
 - Serum/Plasma (12,000 RPM for 3 minutes)
 - HCT/PCV (12,000 RPM for 5 minutes)
 - Urine (1,500 RPM for 2 minutes)
- Presets can be varied for each centrifugation if required
- Rotor allows for quick and easy sample loading
- Maintenance free drive
- Digital display
- Easy to use
- Quiet operation
- Displays RPM or RCF (g-force)

Clinispin horizon 6 & 24 Centrifuges

Clinispin horizon 6 & 24 are versatile centrifuges with 3 default preset cycles for chemistry, coagulation and urine.

- Easy To Use - simple two-button operation to select a preset cycle or lock to a single cycle
 - 3 preset cycles
 - 6 and 24 tube capacity
 - Erasable label for custom cycles
- Lid Lights - flash at the end of each cycle and continue flashing until the lid is opened
- Automatic Lid Lock - will not run with lid open and lid cannot be opened while samples are spinning
- Cool Operation - unique design of the convection based cooling system protects the samples even under the heaviest workloads
- Clear Shatterproof Lid - for easy monitoring
- Brushless DC Motor - no routine maintenance
- Reinforced Guard Bowl - maximum safety and durability
- 2 Stage Horizontal Rotor - patented swing-out design produces ideal horizontally separated samples

Minimise error, reduce training time and deliver the best patient outcome with Clinispin horizon Routine Centrifuges



**Clinispin horizon 6
- ideal where space
is at a premium and
consistency is key**



**Clinispin horizon 24
- ideal for sites with
a larger workload**

In-Practice Urinalysis in 24 hours simplified with

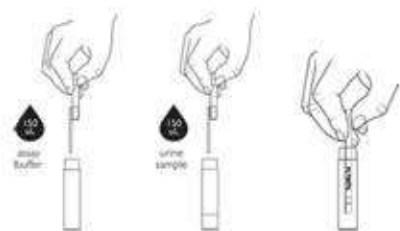
InSight® Urinalysis

A 2-stage process available 24 hours a day

1. RapidBac™ Vet

TEST FOR BACTERIURIA

- * Negative - no bacteriuria indicated
- * Positive - proceed to Flexicult Vet if antibiotic sensitivity is required



Results in 20 minutes

RapidBac™ Vet is a lateral flow immunoassay for the detection of Gram-positive and Gram-negative bacteria in Dog and Cat urine.

- Test immediately in-practice
- Results in less than 20 minutes
- Easy to use
- Room temperature storage
- 98.5% accuracy
- No special apparatus required

Proceed with Flexicult® Vet if RapidBac™ is positive and antibiotic sensitivity is required

2. Flexicult® Vet

Chromogenic In-Practice Urine Culture & Sensitivity Test



Flexicult® Vet is a 24 hour chromogenic culture test for diagnosing UTI's in Dogs and Cats. It aids the identification and quantification of bacteria and helps select the most appropriate antibiotic for effective patient management.

Results within 24 hours

Flexicult Vet contains the following antibiotics:

- Ampicillin
- Amoxicillin/clavulanate
- Oxacillin
- Enrofloxacin
- Trimethoprim/sulfamethoxazole

Agar plate contains a chromogenic substance

Causes bacterial colonies on the agar to appear with different colours depending on the bacterium species



Examples of Flexicult Vet inoculated with *E. coli* (left) and *E. faecalis* (right)

Perform in-house without the need for specialist knowledge

Incubator required - available from Woodley



InSight[®] Urinalysis

Urinalysis is an important tool in disease detection, as well as monitoring and screening animal health. Abnormalities can be indicative of diseases of the urinary system as well as other organ systems, including liver function, acid base status and carbohydrate metabolism.

InSight[®] Urine Test Strips

MS-11 Urine Strips Test for:

- Urobilinogen
 - Blood
 - Glucose
 - pH
 - Bilirubin
 - Protein
 - Ketone
 - Creatinine
 - Specific Gravity
 - Nitrate
 - Leucocytes
- with urine protein/creatinine ratio



MS-2 Urine Strips Test for:

- Microalbumin
 - Creatinine
- with urine microalbumin/creatinine ratio

Multistix[®] 10 SG Reagent Strips

The Multistix[®] 10 SG reagent strip is the reliable frontline test for detection of a broad range of conditions, from detecting urinary tract infections (UTI¹) to diabetes and kidney disorders. Accurately gain a broader clinical insight into a patient's health.

- Reliable testing for UTI, diabetes and kidney disorders
- 10 tests for important markers on a single strip
- Combined leukocyte/nitrite results for better prediction of UTI with fewer false negatives



InSight[®] Urinalysis Reader

- Semi-automatic urine test strip reader with touch screen & printer to be used with InSight Urine Test Strips
- Simply dip the strip into the urine sample and place it on the strip loading plate
- Results displayed in 60 seconds



Use in conjunction with
RapidBac Vet & Flexicult Vet
for complete In-Practice Urinalysis

Urinalysis Atlas

- Sample collections
- Physical characteristics
- Examination of sediment
- Photographic identification of casts
- Contaminants in urine sediment



Refractometer

- Handheld veterinary refractometer with adjustable calibration
- Provides quick and accurate indication of vital fluid levels.
- The triple scale reads: Urine Specific Gravity, Total Serum Protein and Refractive Index
- Refractometer equipped with ATC (Automatic Temperature Compensation)



EZ-SmartTemp[™] Min Max Refrigeration Thermometer

- Easy to use - simple and small design with easy to read digital display
- This calibrated thermometer attaches to the exterior of the refrigeration unit and measures the internal temperature via a probe which is sealed in a non toxic glycol solution
- Bottle insulates sensor from rapid temperature changes when the door is opened
- Triple display simultaneously shows the minimum, maximum and current temperature
- Alarm feature alerts if temperature rises above or falls below a set point - programmable in 1°C increments
- Supplied with velcro and magnetic strips for mounting
- Supplied with calibration certificate



EZ-SmartLog[™] One USB Temperature Datalogger

- Measures and stores up to 16,382 temperature readings over a -35°C to +80°C range
- Direct USB connection for easy set-up, functionality and data download
- User-programmable alarm thresholds
- Status indication via red, green and orange LEDs
- Complete with Windows control software which is easy to download and install
- Supplied with replaceable lithium battery - typically allows logging for 1 year



Hematek[®] 3000 System Slide Stainer

The Hematek 3000 System provides semi-automated slide staining for laboratories that need a robust system capable of staining up to 60 slides per hour. The system helps maximise productivity and deliver quality results through user-defined features and precision controls.

- Continuous-feed loading platform eliminates wasted time associated with batch staining methods
- Individual, consistent slide staining optimises staining quality and enables user-adaptable intensity for standardised slide staining
- Minimal system maintenance helps maximise uptime in your lab
- Compact, RoHS-compliant system guarantees incorporation of environmentally friendly, sustainable substances and supports 'green' initiatives
- All-in-one stain pack includes enough stain for up to 900 slides and offers easy load-and-go operation for optimised daily workflow with minimal hands-on time
- Pumps deliver a fresh, precise volume of reagent for every slide, while the platen provides uniform stain from field to field and slide to slide with accurate mixing and uniform stain and buffer delivery
- Simple pump release mechanism streamlines maintenance
- Slides are immediately available for viewing upon completion of staining and the rinse reagent contains the optimal alcohol concentration for proper slide drying
- System warnings alert users of low stain-level and full waste bin to help ensure uninterrupted, quality results



Practical Automation in Slide Staining

RAL Diff-Quik[™]

RAL Diff-Quik is a simplified and cost-effective alternative to Wright-Giemsa staining and is faster than typical staining procedures. The speed of execution makes it an ideal stain for emergency diagnostics of medullary and bloods smears with a **process time of just 15 seconds**.

Easy

- 3-step method is very easy
- Consists of 3 brief immersions in each of the RAL Diff-Quik solutions
- This manual protocol allows the user to customise and vary the staining intensity
- The different degrees of shading allow preferential staining for every lab

Applications:

- Haematology: Blood smears
- Veterinary Parasitology: Piroplasma
- Haematology: Bone marrow
- Cytology: Spermocytograms
- Cyto-bacteriology: Cytology of biological fluids, urines, cytopunctures and CSF

Ready to Use

- A new packaging has been created for direct staining without the need to decant stains



Convenient pack sizes:

- 3 x 100ml
- 3 x 500ml

Process Time of just 15 Seconds

ADVIA® 2120i Haematology System

Trusted haematology solutions for advanced multispecies testing

The ADVIA 2120i Haematology System is the only haematology system for human and animal samples offering complete multispecies haematology testing capability with practical automation.

- High throughput capacity of 120 samples per hour with sophisticated technologies for analysing White Blood Cell (WBC) Differentials, Red Blood Cells (RBC), Reticulocytes and Platelets
- Accepts up to 150 samples at a time
- 21 pre-programmed species provide ready-to-use cell gating across a wide spectrum of species and an unlimited number of user-definable archetypes allow easy expansion to new species
- Unique playback function allows replay of sample results in alternate species without redrawing or retesting
- Data manager provides full traceability at no additional cost, so you can run customised reports at any time



High Capacity Multispecies Tests

- Autoslide connectivity
- NRBCs on every sample
- Body Fluid Capability
- Unique Unifluidics™ Technology
- Efficient and cost effective workflow
- Fully automated daily maintenance
- “Right first time” results

IMMULITE® 2000 XPi Immunoassay System

The highly reliable IMMULITE® 2000 XPi System is an easy to use, continuous random access immunoassay analyser with one of the largest automated immunoassay menus available and a maximum throughput of 200 tests per hour. Medium to high-volume laboratories can incorporate specialty and allergy testing into routine workloads to improve productivity and efficiency.

Up To 200 Tests/Hour Easy To Use

- Customised automated startup for daily routine maintenance and quality control scheduling
- Reagent onboard stability of 90 days, minimises waste
- Maximum throughput of 200 tests per hour
- No pause sample loading to enhance turnaround time
- Tube-top sample cups for micro-sample handling
- Home screens with at-a-glance status on a 19” touch screen monitor
- Options available for direct water feed and bulk solid waste chute
- Siemens Automation solutions available through VersaCell® Systems



IMMULITE Veterinary Test Menu:

- Total T4
- TSH
- FT4
- ACTH
- Cortisol
- Progesterone
- Vitamin B12
- Folic Acid
- TLI
- Digoxin
- Insulin
- Phenobarbitol
- Troponin I
- Testosterone

This list is not exhaustive - please contact us with your requirements

InSight® EQA

External Quality Assessment (EQA)

External Quality Assessment (EQA) of laboratory equipment is required by the RCVS Practice Standards Scheme and is recommended for any practice with in-practice analysers. In conjunction with the SRUC (Scotland's Rural College), Woodley Equipment are proud to introduce a 'true' External Assessment with...

InSight® EQA

A certified independent External Quality Assessment scheme enabling you to provide the best possible care

For Biochemistry, Endocrinology, Blood Gases, Haematology & Coagulation



InSight EQA is independent of all analyser manufacturers

Why use EQA?

- Maintaining and improving analytical quality
- Improving inter-laboratory agreement thus raising standards
- Detecting equipment failures and identifying reagent problems
- Reviewing staff training
- Initiating and evaluating corrective actions
- Comparing different analytical methods
- Compliant with the RCVS Practice Standards Scheme

Why choose EQA?

- InSight EQA is an internet based EQA scheme for biochemistry, endocrinology, blood gases, haematology and coagulation
- InSight EQA provides a 'true' external assessment by comparing results from multiple analysers of the same make and NOT just with a reference laboratory analyser
- InSight EQA is independent of all analyser manufacturers
- Flexible scheme so you choose which analytes to assess

3 Simple Steps

1. We send you a sample to analyse each month
2. You email back the results
3. We send you a report within 7 days comparing your results with all subscribers for both identical analysers and all registered with the scheme



InSight EQA is a 'NOT FOR PROFIT' scheme in conjunction with Scotland's Rural College (SRUC)

For further information on SRUC's activities visit www.sruc.ac.uk

WOODLEY
EQUIPMENT COMPANY LTD.

InSight[®]

Internal Quality Control Material

Here at Woodley Equipment, we think that accurately verified analyser test results are essential. That is why we are providing Woodley InSight Analyser customers with free monthly Quality Control material.

The veterinary laboratory equipment market has grown considerably over the last 20 years with the majority of UK practices now performing in-house testing. With more surgeries than ever before managing their own laboratories, there has never been a greater need for quality assurance (QA) programs.

Quality controls (QC) form part of a quality assurance (QA) program to guide the work of the practice laboratory and assess its overall quality and performance. This assures the veterinarian that test results generated are both accurate and precise. The Royal College of Veterinary Surgeons Practice Standards states that internal laboratory QC procedures used in conjunction with an external quality assurance scheme must be routinely undertaken to create the uniform high quality that makes laboratory practice results reliable.

In order to assist practice laboratories assess the quality and performance of their analysers, Woodley Equipment will be providing free haematology in-house QC material and training to all of our Woodley InSight analyser customers.



If you would like more information please contact Woodley Equipment Company

InSight[®] Analysis

"PASSIONATE ABOUT LABORATORY DIAGNOSTICS"

Delivering excellence to our customers for over
30
years



Approved
Partner

Laboratory Diagnostics
Point of Care Solutions

SIEMENS
Healthineers



01204 669033 (Option 1)



sales@woodleyequipment.com



www.woodleyequipment.com



Old Station Park Buildings
St. John Street
Horwich
Bolton
Lancashire
BL6 7NY
UK

**"PASSIONATE ABOUT
LABORATORY DIAGNOSTICS"**

WOODLEY
EQUIPMENT COMPANY LTD.